

30" RADIANT SELF-CLEAN FREE-STANDING ELECTRIC RANGE

IMPORTANT SAFETY NOTICE: This information is intended for use by individuals possessing adequate backgrounds of electrical, electronic and mechanical experience. Any attempt to repair a major appliance may result in personal injury and property damage. The manufacturer or seller cannot be responsible for the interpretation of this information, nor can it assume any liability in connection with its use.

DISCONNECT POWER BEFORE SERVICING

IMPORTANT: RECONNECT ALL GROUNDING DEVICES. All parts of this appliance capable of conducting electrical current must be grounded. If the ground strap, clips, or wires are not used or are not used to complete a path to ground, the appliance may be damaged and returned to their original position and properly fastened.

GROUNDING SPECIFICATIONS

Ground Path Resistance 0.1Ω

Insulation Resistance 250KΩ

INSTALLATION REQUIREMENTS

Power Supply This appliance must be supplied with proper voltage and frequency, and connected to an individual, properly grounded branch circuit, protected by a circuit breaker or time delay fuse, as noted on rating plate. Wiring must conform to the National Electrical Codes. The rating plate is located on the lower front frame behind the storage drawer.

Overcurrent Protection Ranges

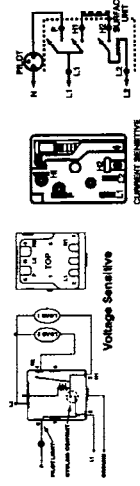
NEC RATING	MAXIMUM KILOWATT RATING
208V	2.40V
238V	12.4
40 Amp	12.4
40 Amp	15.4
50 Amp	17.4
50 Amp	21.4
50 Amp	22.0

Aluminum Wire CAUTION: This range connector blocks recognized for copper wire only. NOT ALUMINUM WIRE. Refer to the installation instructions for additional details.

BAKE AND BROIL UNIT SERVICE

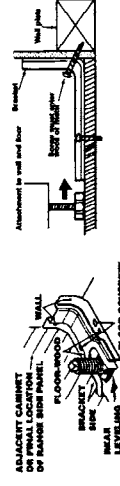
The bake and broil units can be serviced from the front. Both units use straight push on terminals. The clearance hole in the oven liner is very tight and care must be taken in pulling the unit into the oven not to knock the terminal off. If this happens the unit must be removed from the installation.

SURFACE UNIT SWITCHES & CONTROL TYPES:

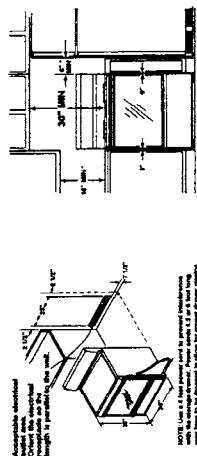


NOTE: Installation information for

reference only. See installation instructions shipped with details and before attempting to install. Brackets should be attached to the floor or wall to hold either right or left rear leg leveler. Make sure leg leveler reengages the bracket when range is moved for any reason.



MINIMUM CLEARANCES



NOTE: Effective January 1, 1996, the National Electrical Code requires that new or rewired construction utilize a 4-conductor connection to an electric range.

RADIANT HEATING ELEMENT SYSTEMS

The radiant heating element consists of a spiral wound resistance wire attached to micro porous insulation with molded ceramic fiber walls in a common protected metal tray.



The Heating Elements come in three sizes:

- 6" - 240 Volt 1500 Watts
- 8" - 240 Volt 2000 Watts
- 9" - 240 Volt 2300 Watts (Dual Unit 6" & 9")

TEMPERATURE LIMIT/HOT LIGHT SWITCH

The Temperature Limited Light Switch performs two functions:

1. Turns on HOT LIGHT as glass temperature reaches 150°F. The hot light will turn on until the glass surface above the heating unit has cooled below 150°F (even after surface unit switch has been turned off).
2. Disconnects glass temperature above a unit has exceeded its limit of approximately 1031°F and disconnects power to that unit. When glass temperature cools below 1031°F the unit will turn back on.

The temperature limit/light switch cannot be calibrated.

HOT SURFACE INDICATOR LIGHT

When glass temperature reaches 150°F the Hot Surface Indicator Light is activated to alert consumer that glass surface is too hot to touch. The Hot Surface Indicator Light is turned on by an additional set of contacts within the temperature limiter.

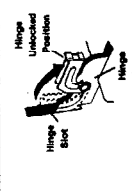
DUAL CIRCUIT CONTROL

The right front element has two cooking zones:

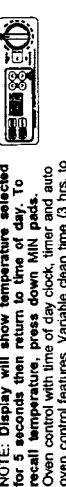
- To use the large 9" cooking area, push to turn the control knob to desired setting, and push in the top portion of the rocker switch next to the control knob.
 - To use the small 6" cooking area, push to turn the control knob to desired setting and push in the bottom portion of the rocker switch.
- When a cooking zone is activated, coils beneath the zone radiate heat through the glass cooktop to the utensil. The red glow of the coils will be visible through the glass. It will take the cooking zone on the glass surface a few moments to heat up. The coil cycles on and off to maintain your selected control setting.

REMOVABLE OVEN DOOR

- To Remove:
1. Fully open the door.
 2. Push the hinge locks down toward the door frame, to the unlocked position. This may require a flat blade screwdriver.
 3. Firmly grasp both sides of the door at the top.



OVEN CONTROL



NOTE: Display will show temperature selected for 5 seconds then return to time of day. To recall temperature, press down MIN pads. Oven control with time of day clock, timer and auto 5 hrs. 59 mins. features. Variable Clean Time (3 hrs. to 5 hrs.)

To Adjust Bake Temperature:

1. Press and hold both the increase and decrease hour pads for about 4 seconds. Display will change from time of day to show 70° or last setting.
2. Raise or lower oven temperature by using the Hour Increase/Decrease pads.
3. Approx. 5 seconds after temperature is changed, the display will return to time of day and oven is ready for use.

DOOR LATCH MECHANISM

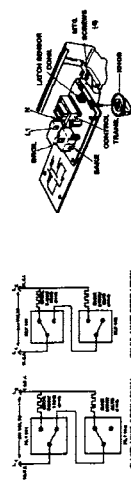
The latch mechanism is thermally operated. When the latch handle is moved to the clean position the latch hook engages into a slot in the oven door. As the clean cycle progresses, the increase in oven temperature causes a thermal coil on the latch mechanism to expand and the latch mechanism can no longer engage into the path of the latch mechanism thus locking it into position.

The door locks when the oven has reached a temperature between 500 and 600 degrees F and will remain locked until the oven has dropped below these temperatures (650-600 degrees F).

CONTROL VOLTAGES

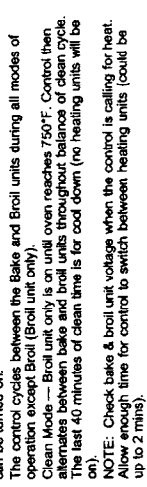
The following voltages must be present on the control board:

- TERMINALS VOLTAGE**
- L1 to N 120 Volts (all the time) Control Trans.
 - L1 to BAKE 240 Volts (knob in "OFF" position)
 - L1 to BROIL 240 Volts (knob in "OFF" position)



SENSOR & LOCK CIRCUITS

Disconnect power and make measurement from side of connector that has terminals exposed.



OVEN DOOR



4. Close door to the door removal position.
5. Lift door up until the hinge arm is clear of the slot.

To Replace:

1. Firmly grasp both sides of the door at the top, with the door at the same angle as the removal position, seat the bottom edge of the hinges into the bottom edge of the hinge slot.
2. Fully open the door.
3. Push the hinge locks up against the front frame of the oven cavity, to the locked position.
4. Close the oven door.

Cooling Air Flow

Air enters the door assembly through large slots in the bottom and flows upward between the inner and outer assemblies, exhausting through slots in the top of the door. **DO NOT INSULATE THIS AIR CHANNEL.**

To Service Full Glass Door

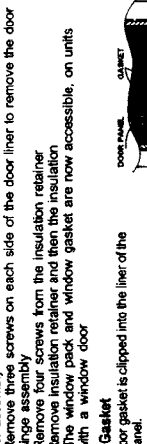
1. Complete door assembly.
 - Remove three screws from the bottom door frame
 - Remove two screws at the top of the door on the liner
2. The liner assembly and outer glass panel assembly can now be separated.
 - Outer glass panel assembly:
 - Remove four screws from the side posts at the top near the door vent trim
 - Slide the bottom trim and top vent trim out to free the outer door glass and cannot be separated
3. Liner assembly:
 - Remove three screws on each side of the door liner to remove the door hinge assembly
 - Remove four screws from the insulation retainer
 - Remove insulation retainer and then the insulation
 - The window pack and window gasket are now accessible, on units with a window door

Door Gasket

The door gasket is clipped into the liner of the door panel.

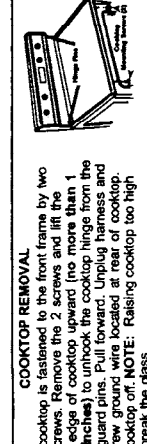
To Service Gasket

A 6" gap must be left in the gasket at bottom of the oven for proper baking results.



COOKTOP REMOVAL

The cooktop is fastened to the front frame by two (2) screws. Remove the 2 screws and lift the back edge of cooktop upward (no more than 1 to 2 inches) to unhook the cooktop hinge from the background pins. Pull forward. Unplug harness and unscrew ground wire located at rear of cooktop. Lift cooktop off. NOTE: Raising cooktop too high can break the glass.



CONTROL PANEL REMOVAL

The control panel contains the ERC infinite heat switches and oven light switch.

1. Remove 2 screws (from bottom) securing control panel to the background.
2. Remove 2 screws at the top, in the back of the range.
3. Pull bottom of panel out while lifting panel up.

CAUTION: Place protective covering (such as towel) between control panel and cooling surface to avoid damage to control panel.

